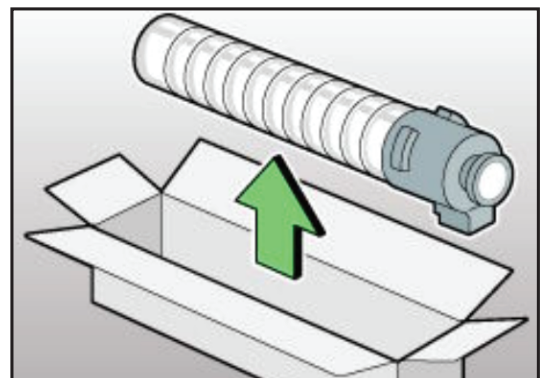
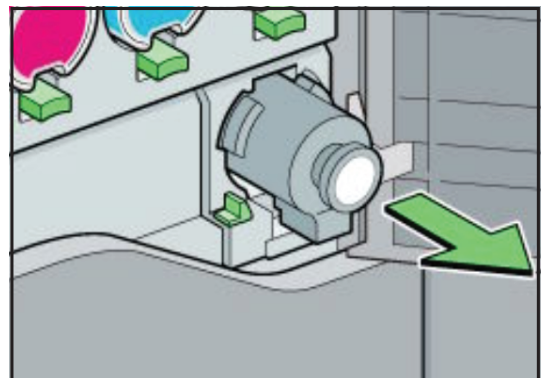
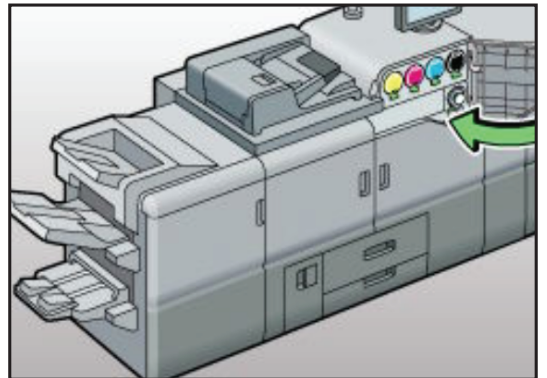


CIP Training

Pro C7200 series

5th Station Replacement

RICOH
imagine. change.



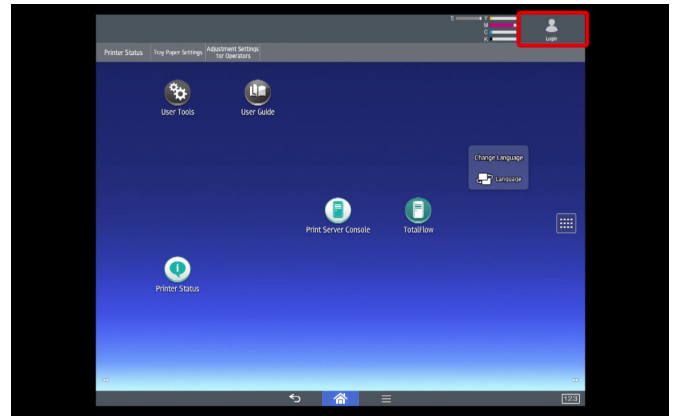
CIP Training Pro C7200 series

5th Colour replacement

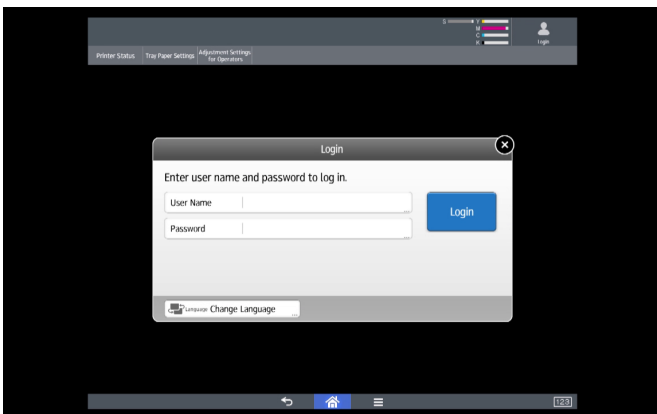
Please note: Steps 26 - 39 are not needed if you have complete 5th station replacement kits for all your Special toners.



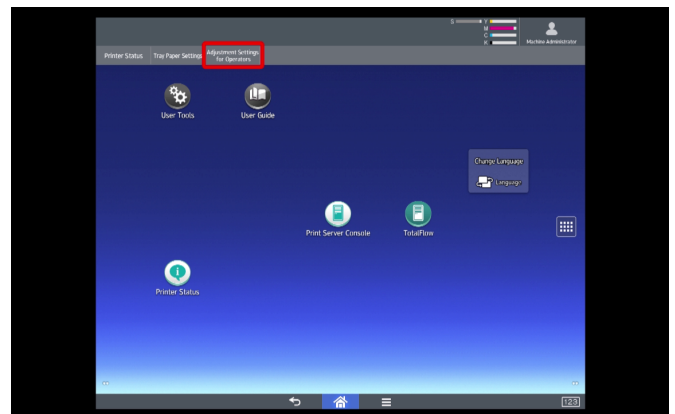
1. Power on machine and wait until warm-up process has completed.



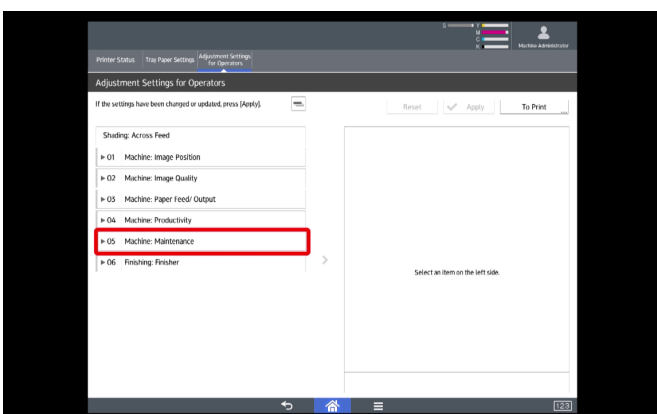
2. Select "Login".



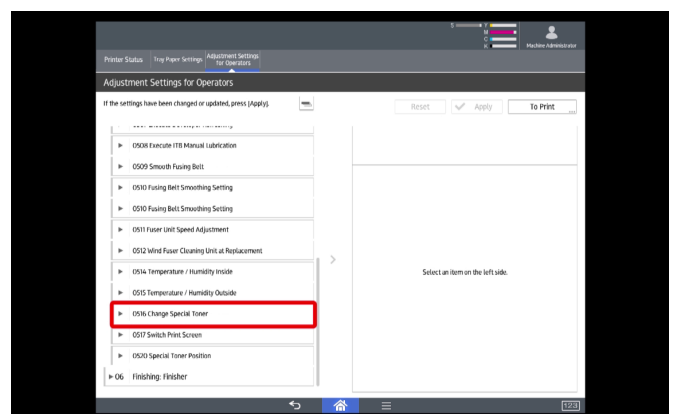
3. Login as admin.



4. Select "Adjustment Settings for Operators".



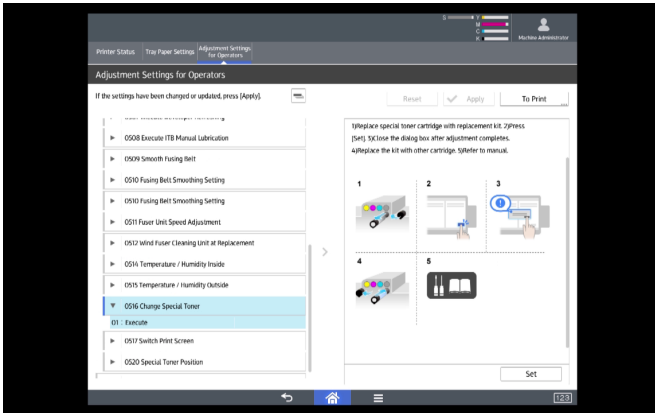
5. Select "05 Machine Maintenance".



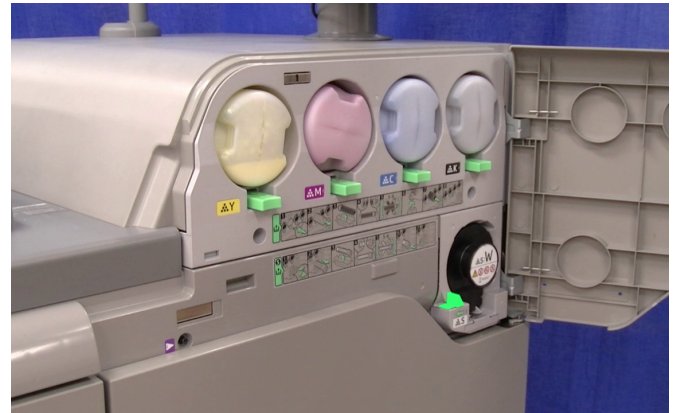
6. Select "0516 Change Special Toner".

CIP Training Pro C7200 series

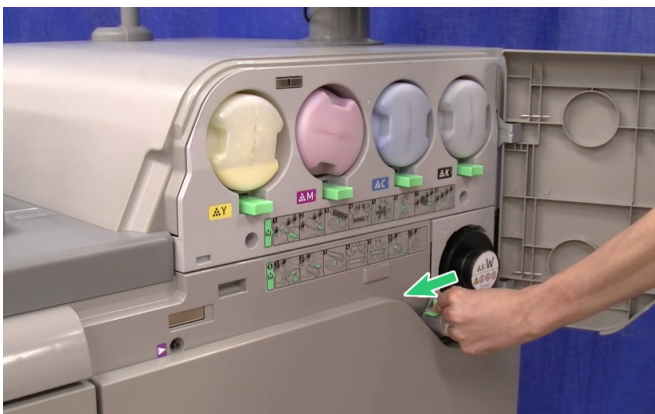
5th Colour replacement



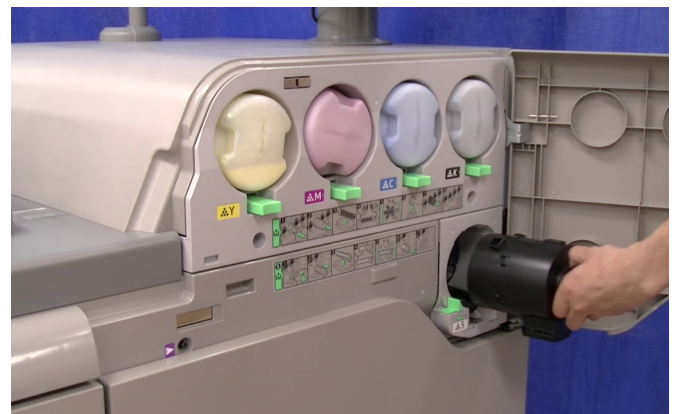
7. Follow on-screen instructions.



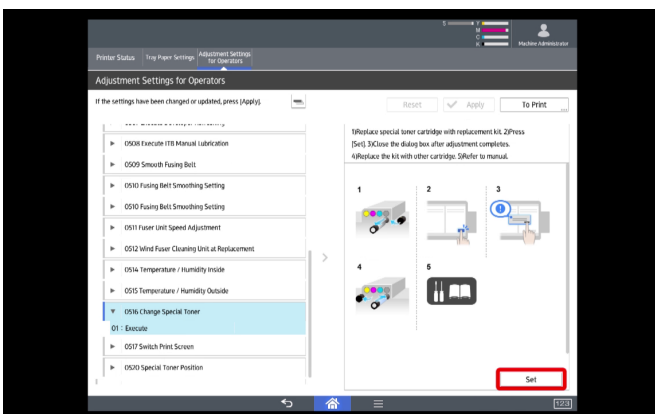
8. Open front upper right cover. Here we will be replacing White toner with Clear.



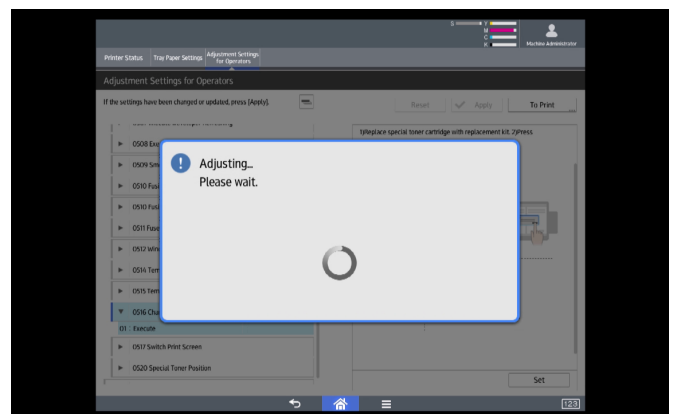
9. Push lever to left to release toner bottle.



10. Replace with "Dummy" toner bottle.



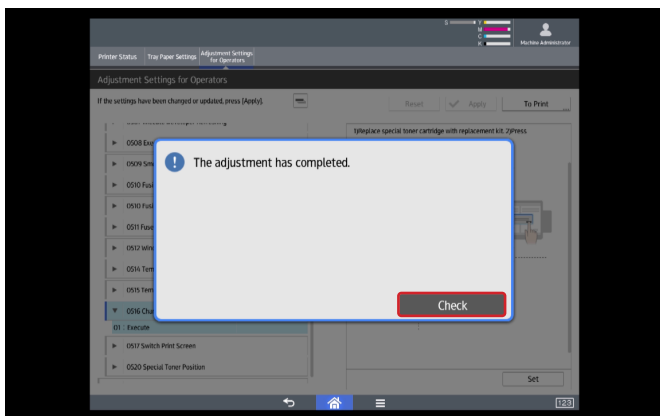
11. Select "Set".



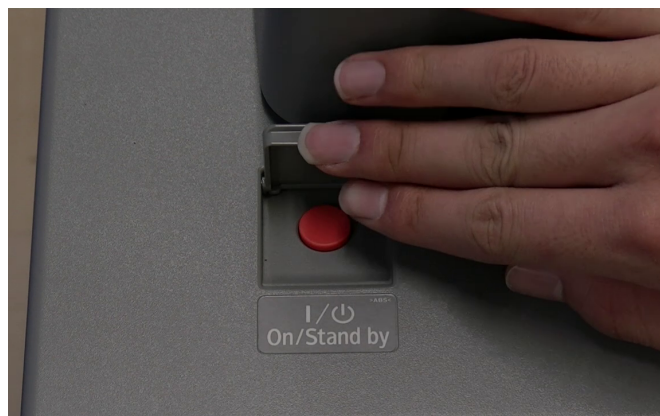
12. Wait for machine to perform adjustment.

CIP Training Pro C7200 series

5th Colour replacement



13. Select "Check".



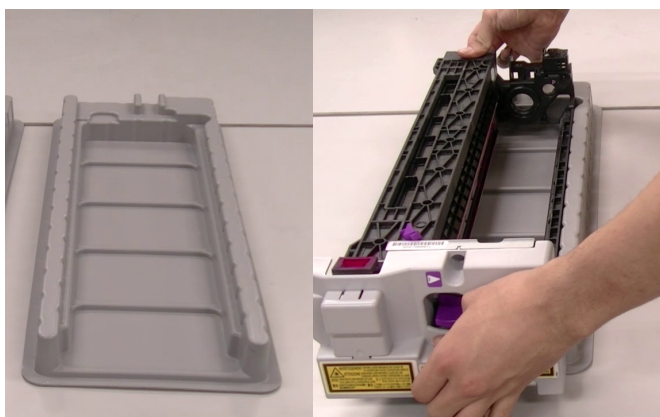
14. Power off machine.



15. Remove "Dummy" toner bottle.



16. Insert "Catchment" Toner bottle supplied with Toner pump.



17. Place "new colour" assembly in tray provided.
(Pictured: incomplete assembly.)



18. Open machine front covers .

CIP Training Pro C7200 series

5th Colour replacement



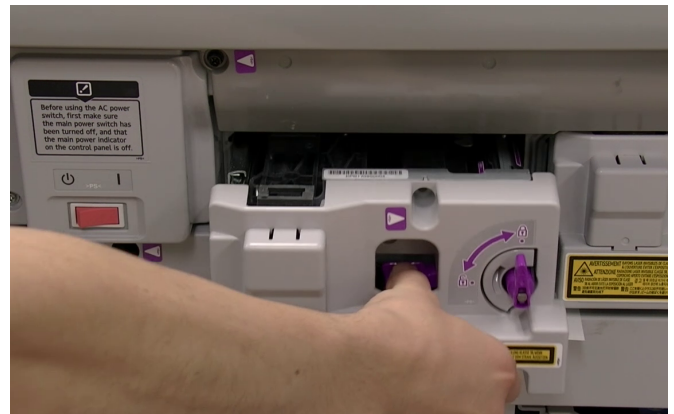
19. Place sheet of paper under 5th (far left) unit as pictured.



20. Using supplied purple "Hex Tool", remove bolt as pictured.



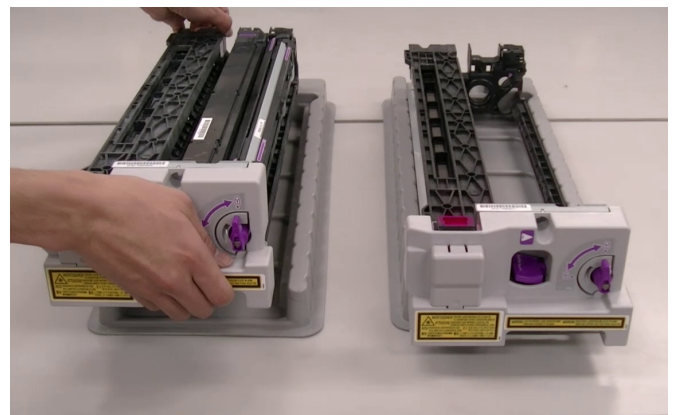
21. Squeeze central lever.



22. Pull assembly outwards.



23. Once fully extended, lift assembly from rails.



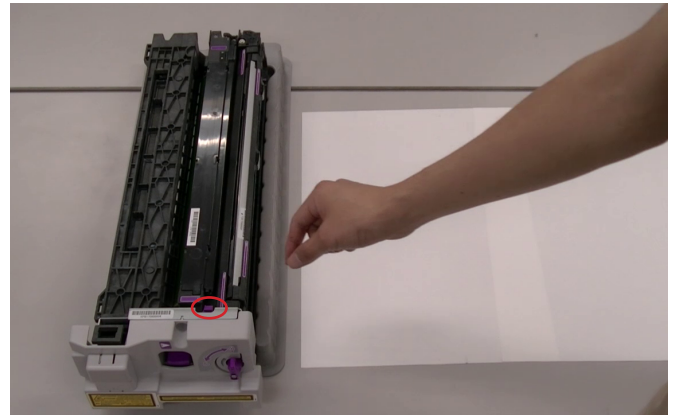
24. Place "Current" assembly in the 2nd tray.

CIP Training Pro C7200 series

5th Colour replacement

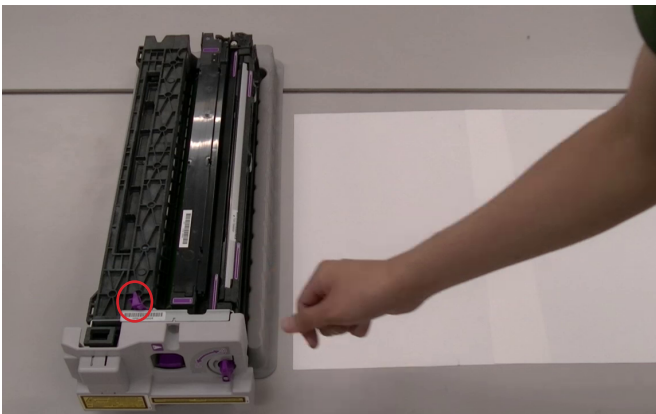


25. Gently push rails back in.

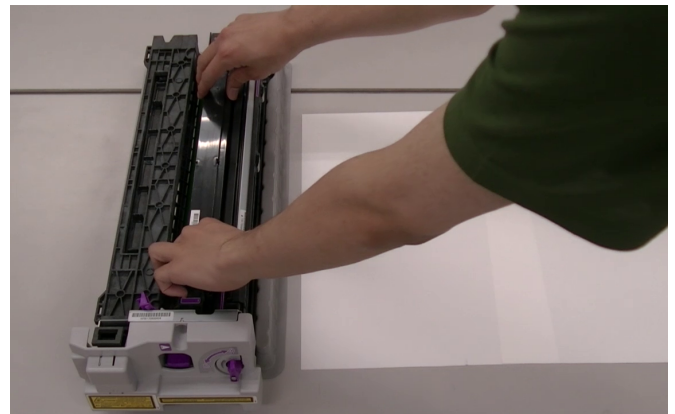


26. On "Current" unit, lift circled lever.

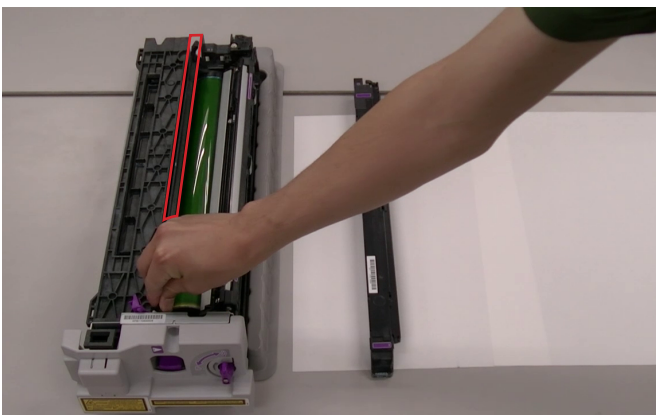
Please note: Steps 26 - 39 are not needed if you have complete, assembled 5th station replacement kits for all your Special toners.



27. Push lever back to pictured position.



28. Remove the charge roller as pictured.



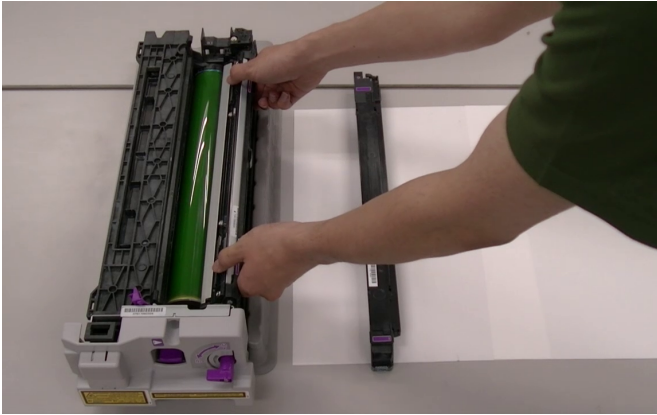
29. Push the drum handle back.



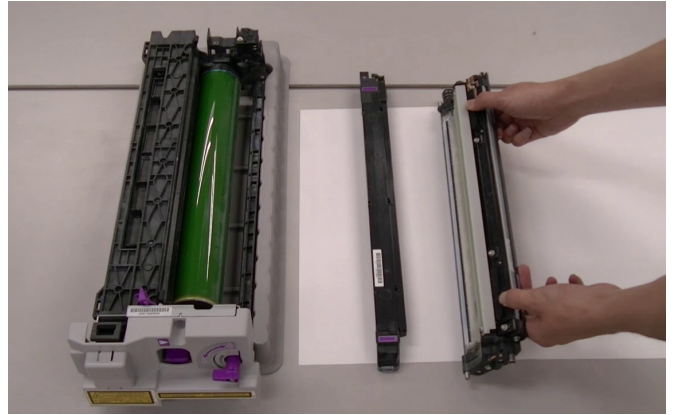
30. Turn front lever to "unlock" position

CIP Training Pro C7200 series

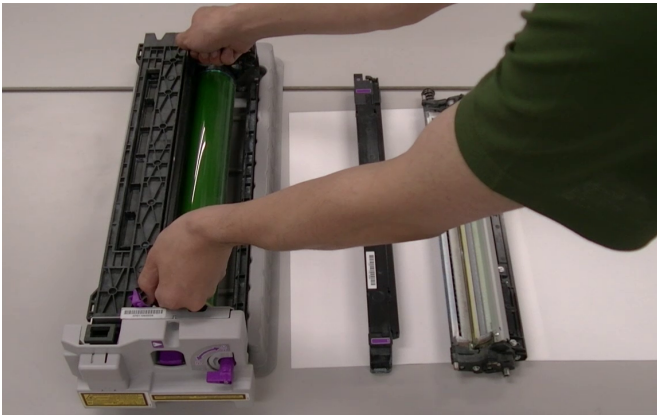
5th Colour replacement



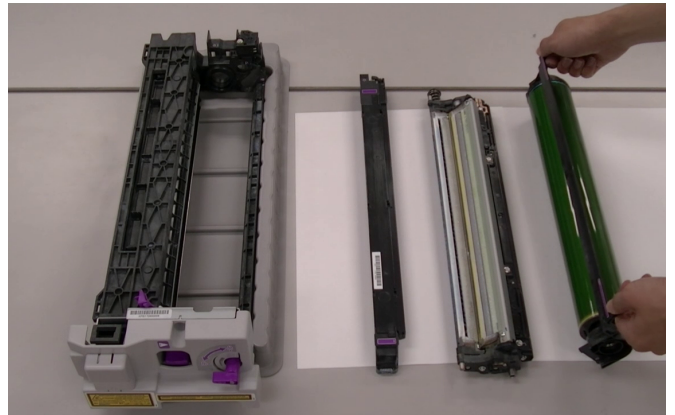
31. Grip the cleaning unit as pictured.



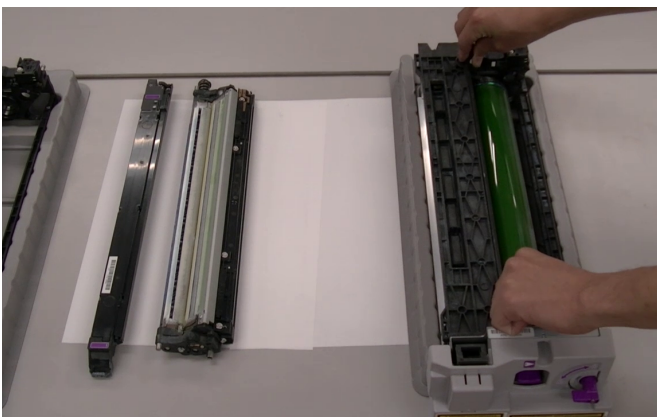
32. Place on paper next to the charge roller.



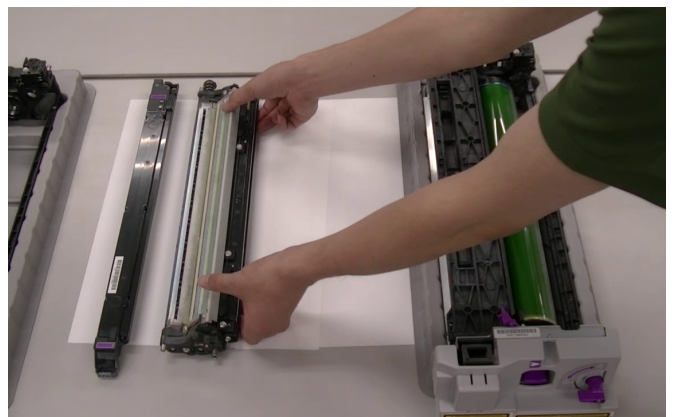
33. Grip Drum unit as pictured.



34. Place on paper next to the cleaning unit.



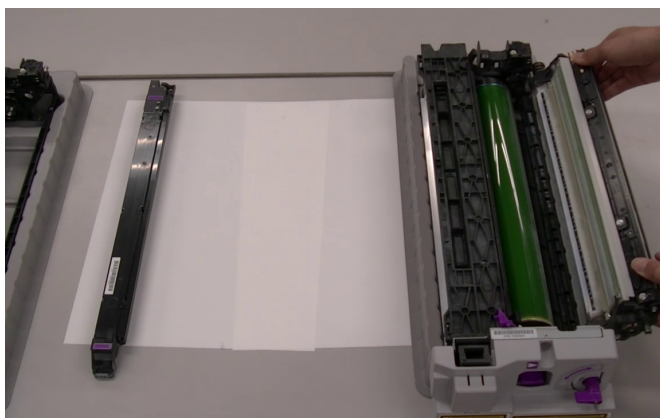
35. Insert Drum unit into "New" assembly.



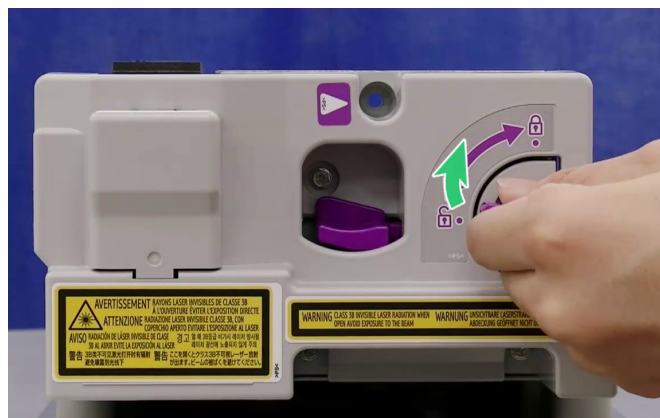
36. Grip the cleaning unit as pictured.

CIP Training Pro C7200 series

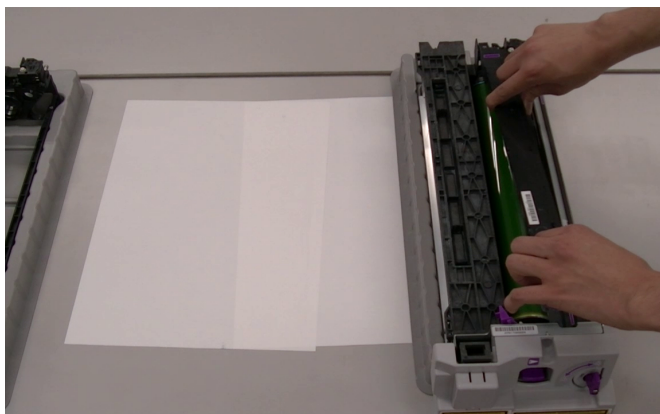
5th Colour replacement



37. Insert in to "New" assembly as pictured.



38. Turn lever on front of "New" unit to lock.



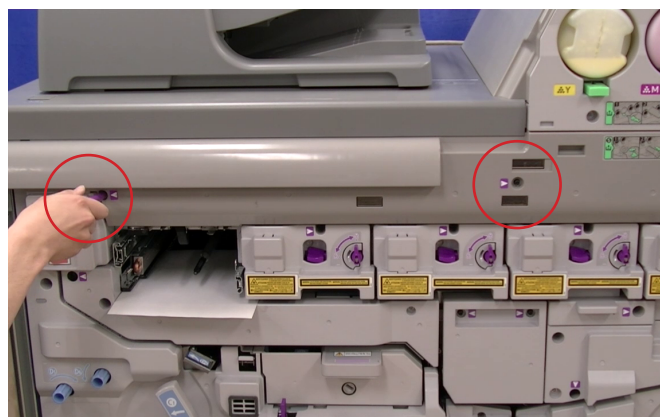
39. Insert the charge roller and lock in to place within assembly.



40. Put "current" assembly unit away in box provided.



41. Prepare "hopper" tray.



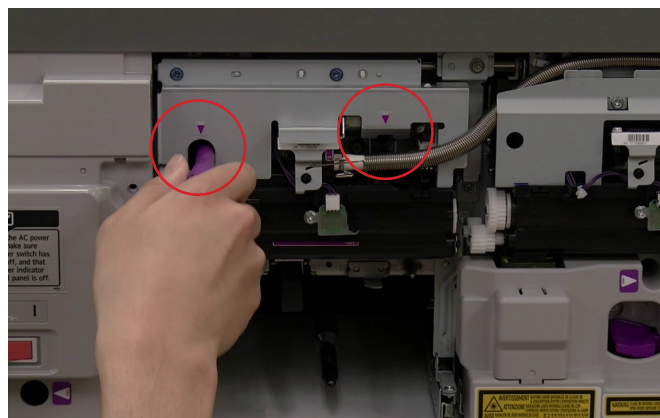
42. Remove bolts holding upper cover.

CIP Training Pro C7200 series

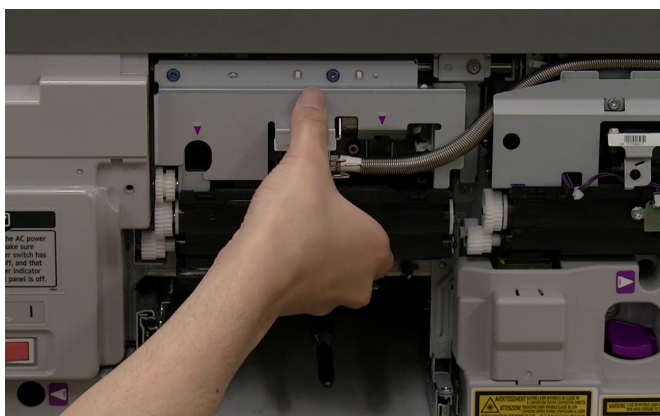
5th Colour replacement



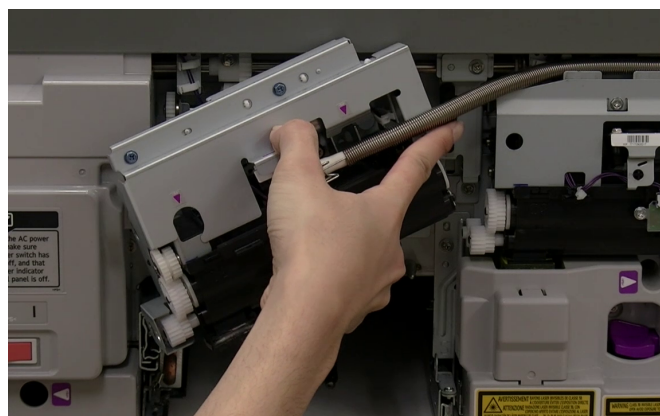
43. Remove upper cover.



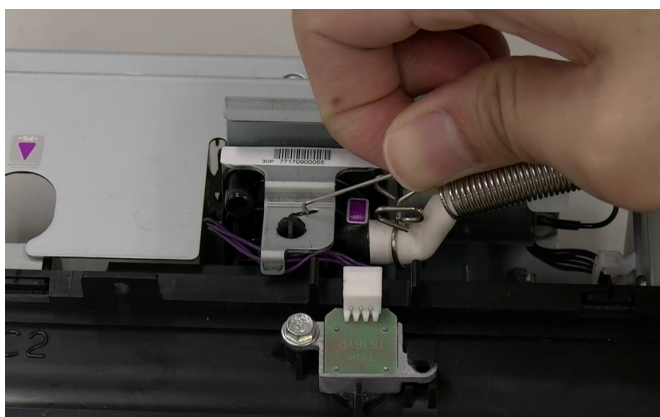
44. Remove screws holding 5th station hopper.



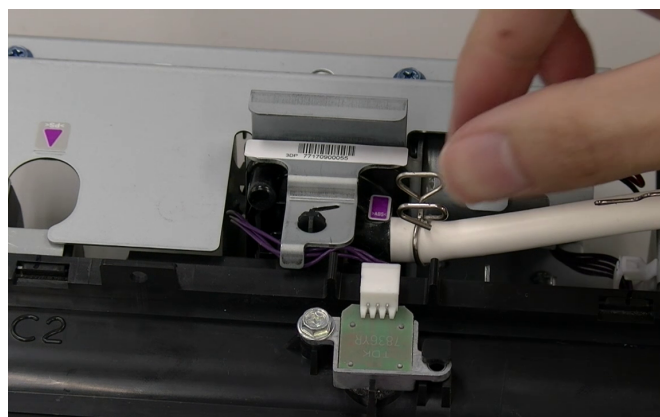
45. Remove 5th station hopper.



46. Carefully remove spring tubing with hopper unit.
For ease of handling, you may wish to remove tubing assembly prior to removal.



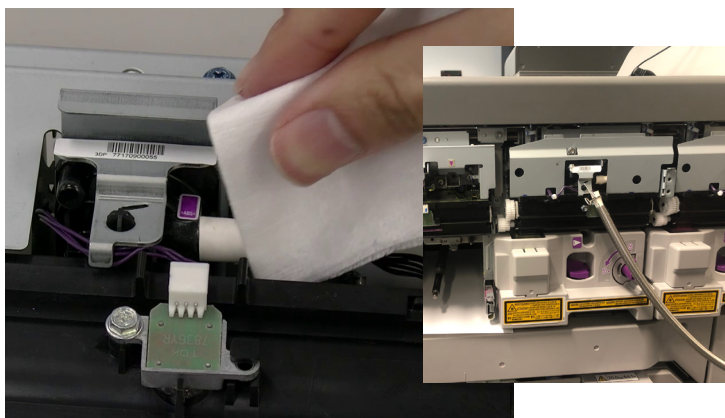
47. Remove "spring end" from housing.



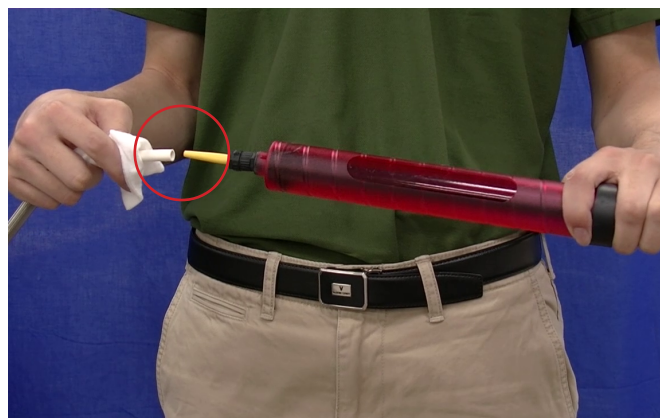
48. Pinch clamp holding tubing in place and slide to the right.

CIP Training Pro C7200 series

5th Colour replacement



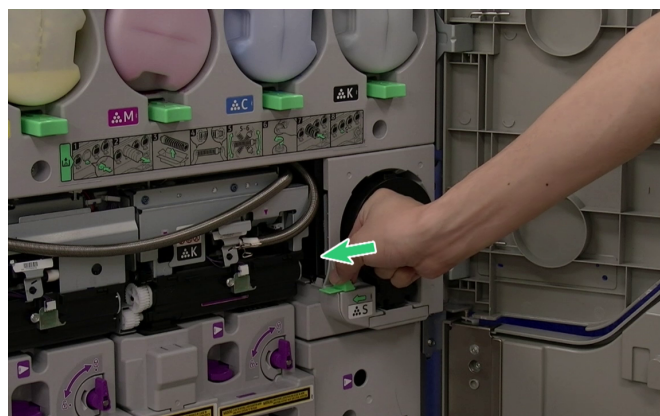
49. Use cloth to pinch tubing to remove from hopper, and secure wire to next station, as pictured.



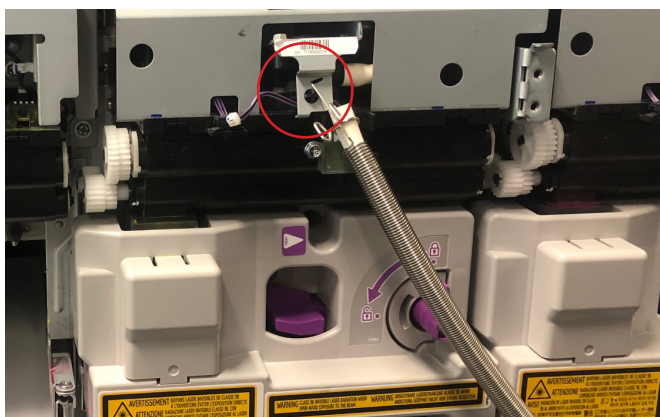
50. Insert supplied pump in to tubing.



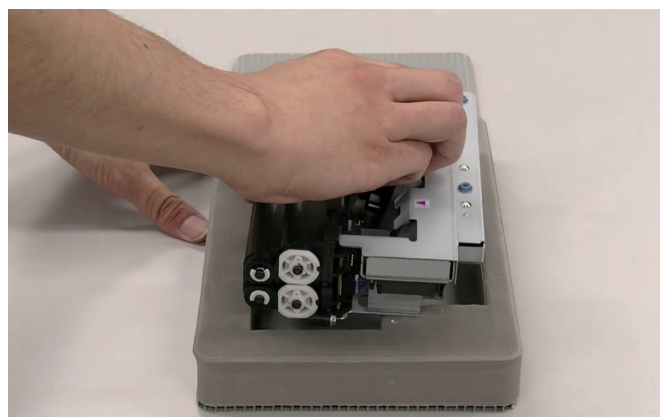
51. Pump 5 times, holding tube to prevent it blowing off.



52. Remove catchment bottle by pressing button left. Place pump and catchment bottle back in box.



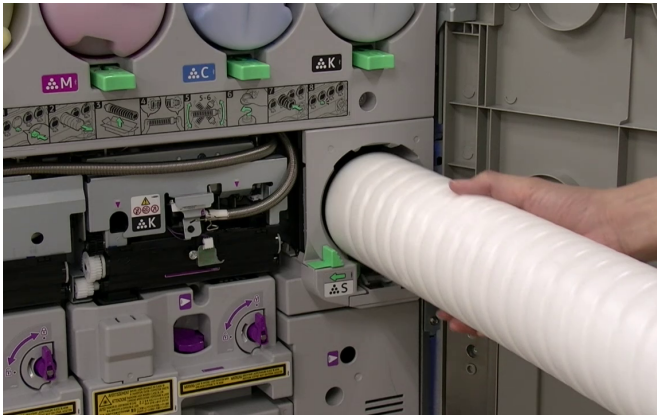
53. Remove tubing from pump and temporarily place back on to spare housing.



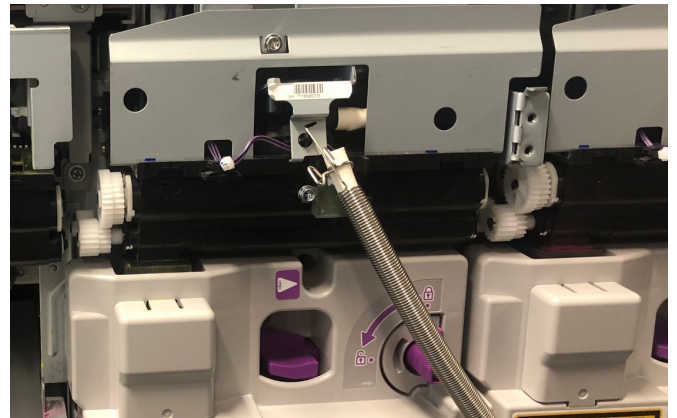
54. Place current (removed) hopper in tray and place back in supplied box.

CIP Training Pro C7200 series

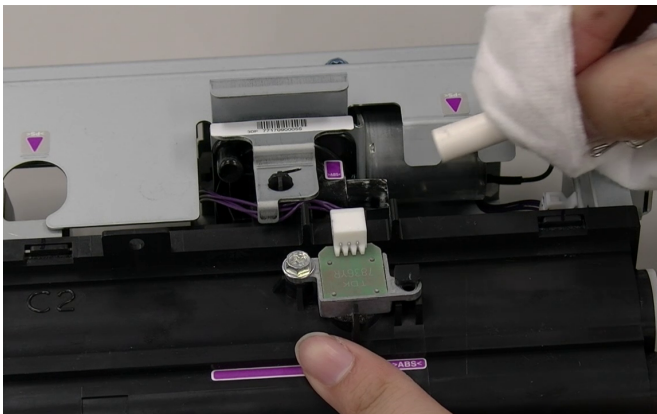
5th Colour replacement



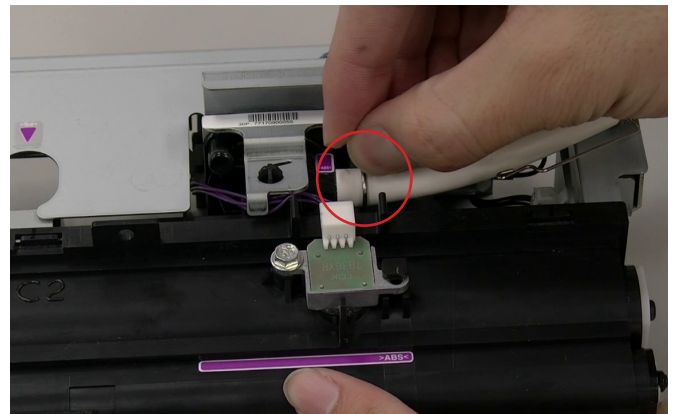
55. Insert new toner (in this case Clear).



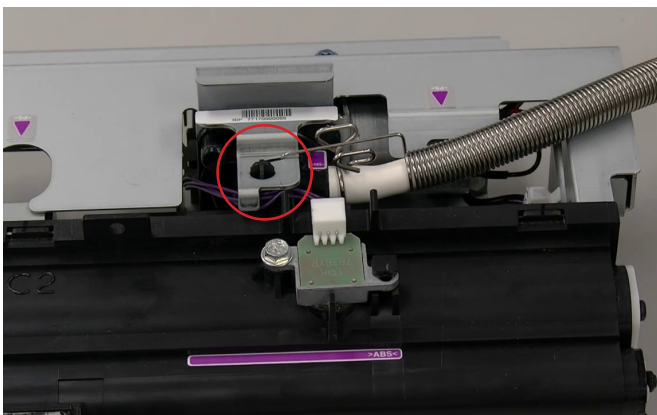
56. Remove tubing from temporary holder.



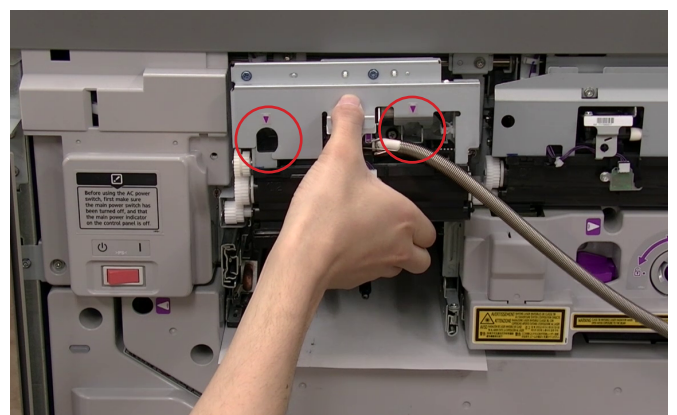
57. Attach tubing to new hopper.



58. Re-attach clamp over tube and hopper.



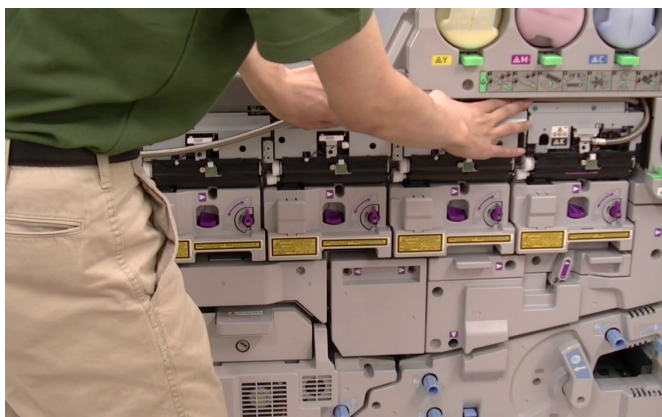
59. Re-attach spring end to housing.



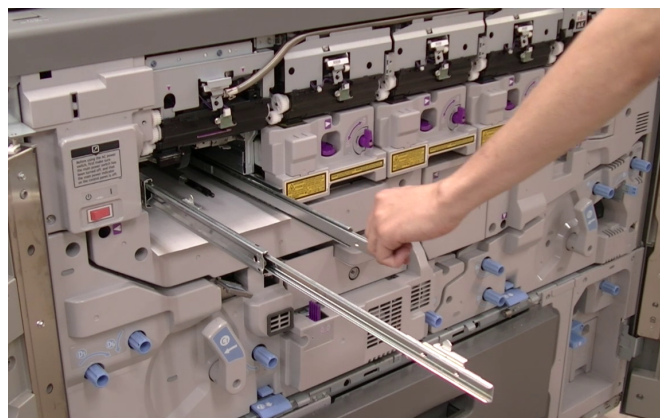
60. Insert new hopper to machine replacing bolts also. **For ease of handling, you may wish to replace tubing assembly after inserting "new" hopper.**

CIP Training Pro C7200 series

5th Colour replacement



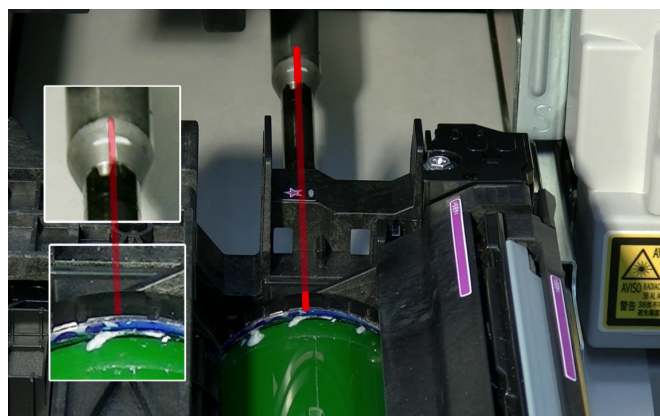
61. Carefully feed spring tubing back along path.



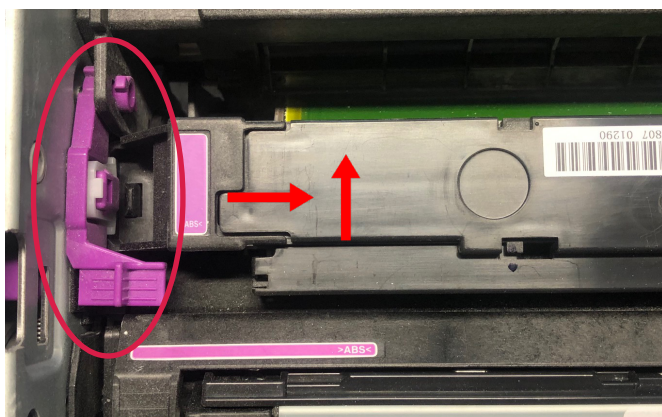
62. Fully extend guide rails back out from machine.



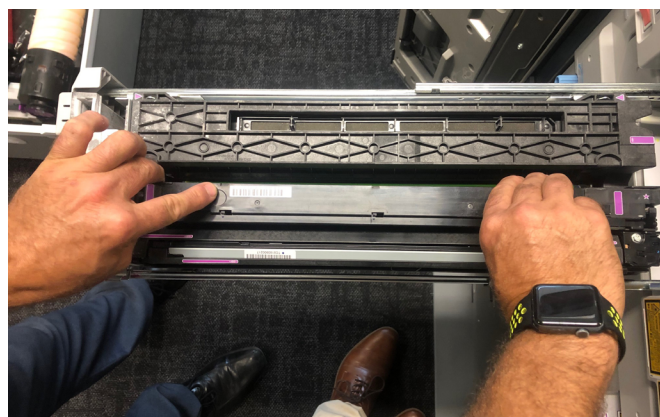
63. Carefully place new drum assembly on to rails.



64. Make sure drum marking (+) is aligned with housing marking (+). Follow steps 65-71 to make drum marking visible.



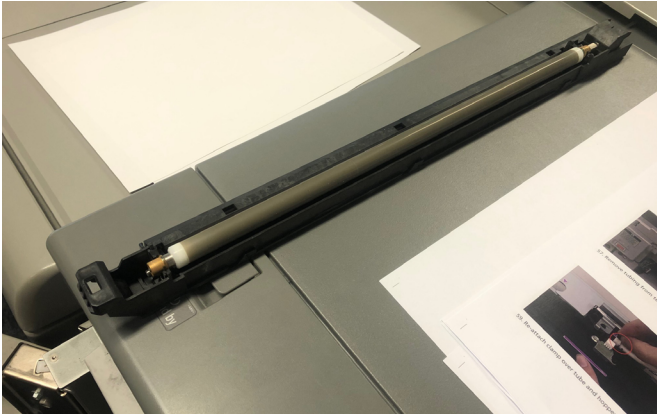
65. Lift lever right and up to release Charge Roller Unit.



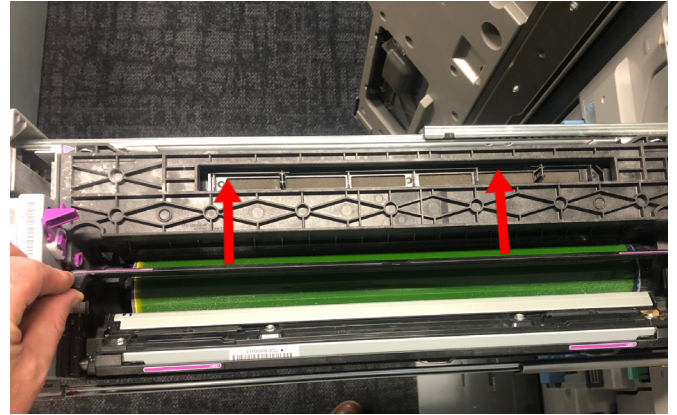
66. Remove Charge Roller Unit.

CIP Training Pro C7200 series

5th Colour replacement



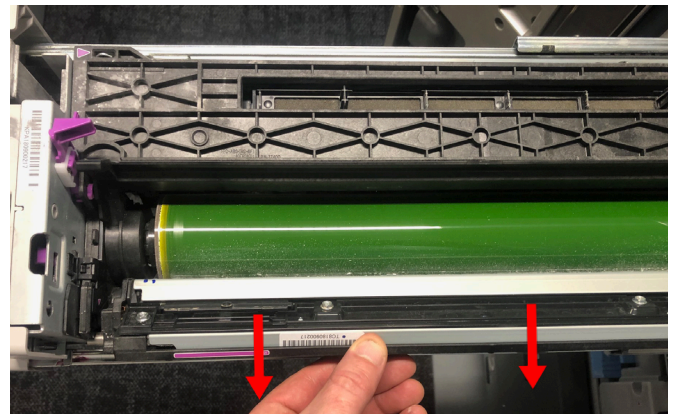
67. Place Charge Roller Unit in a safe level area.



68. Move the above gate forward.



69. Unlock Drum Cleaning Unit at front of unit.



70. Pull Drum Cleaning Unit back.



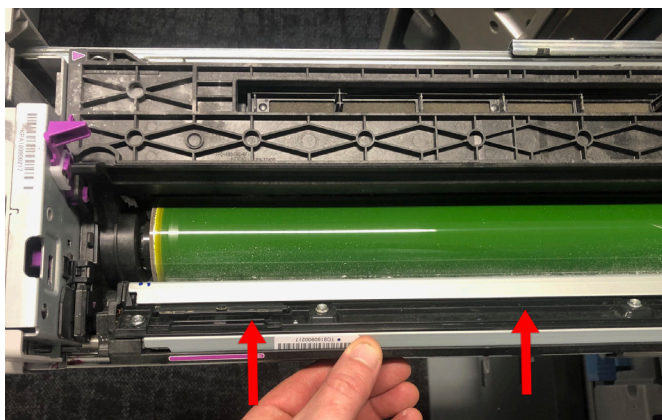
71. Turn drum counter-clockwise **only** to align positive symbols on both drum and spindle.



72. Lubricate drum with powder provided.

CIP Training Pro C7200 series

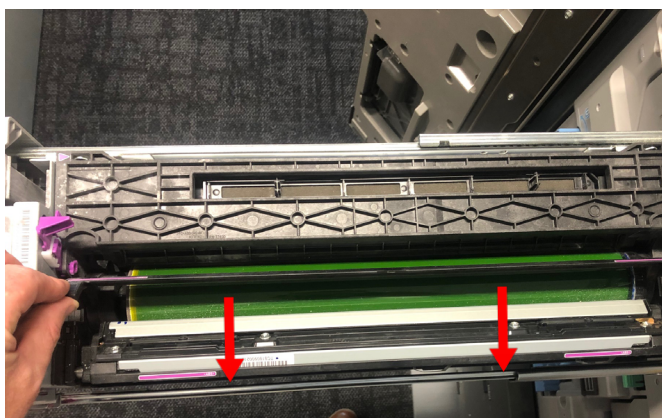
5th Colour replacement



73. Push Drum Cleaning Unit back in to place.



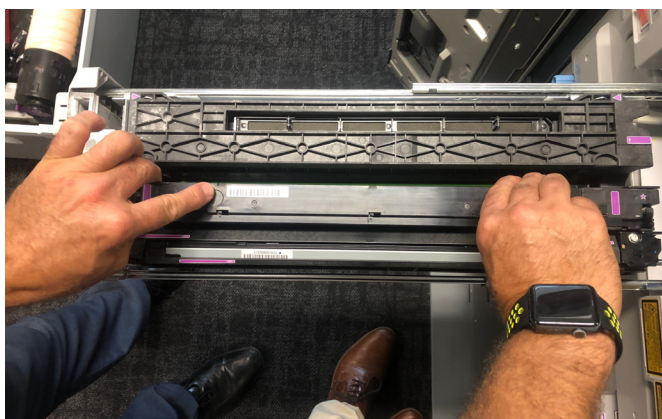
74. Lock Drum Cleaning Unit.



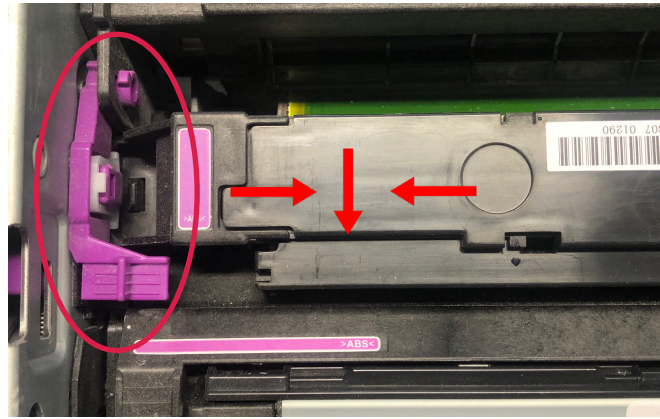
75. Move the above gate back against cleaning unit.



76. Pickup Charge Roller Unit.



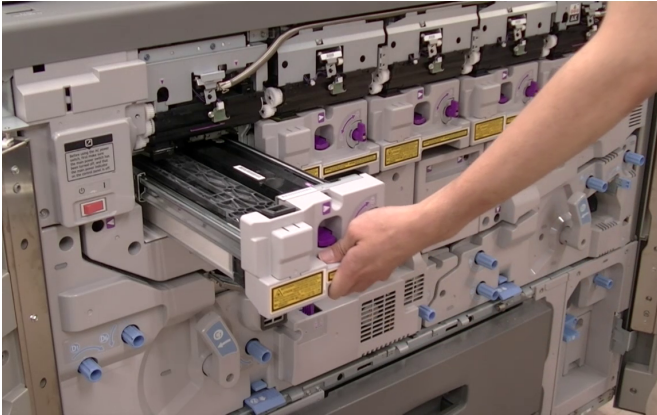
77. Place back in to position.



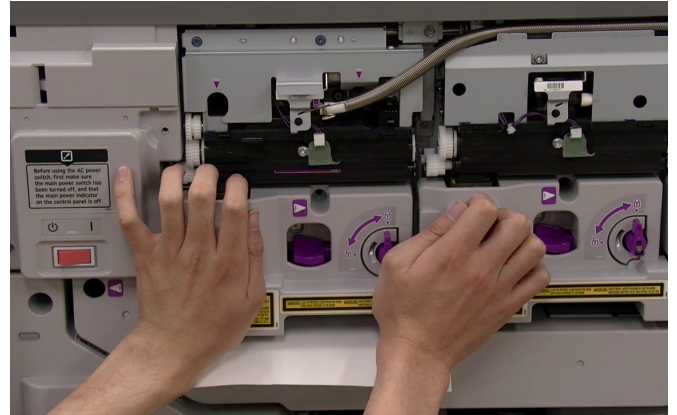
78. Lift lever right, down and left back in to place.

CIP Training Pro C7200 series

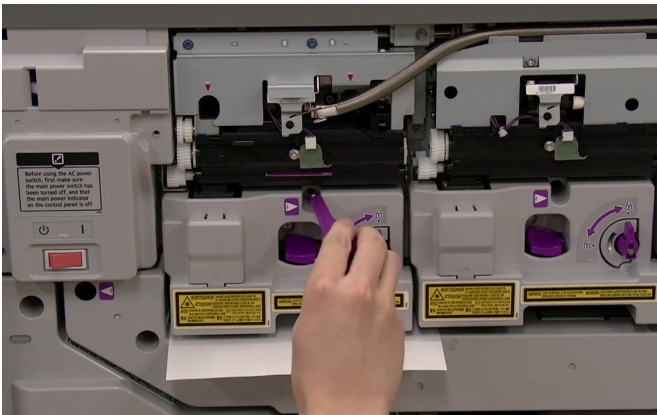
5th Colour replacement



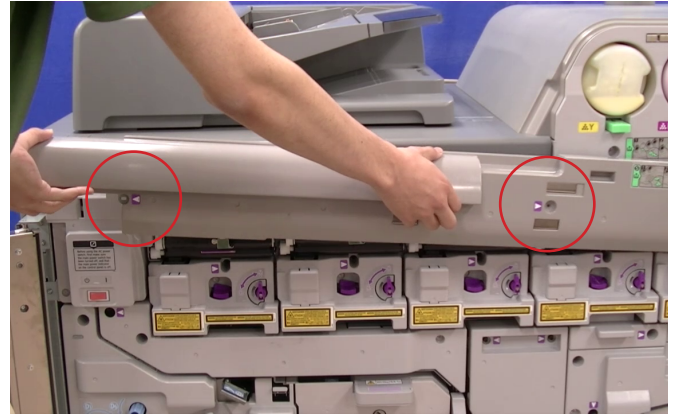
79. Slide drum assembly back in to machine.



80. Push in till you hear a click, ensuring assembly is firmly in place.



81. Replace bolt holding assembly in place and remove paper from underneath.



82. Re-attach upper cover and replace bolts.



83. Close front covers.

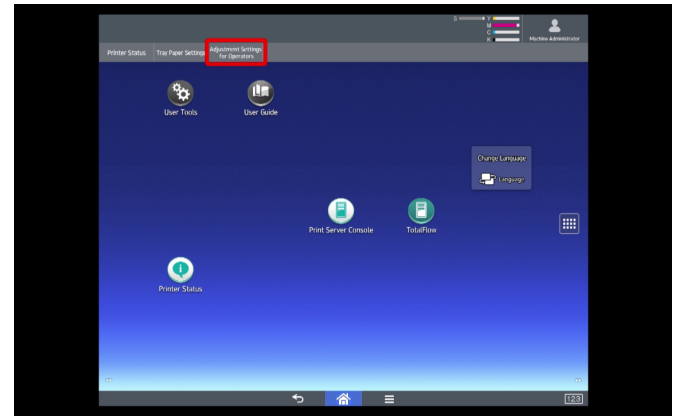


84. Power ON machine.

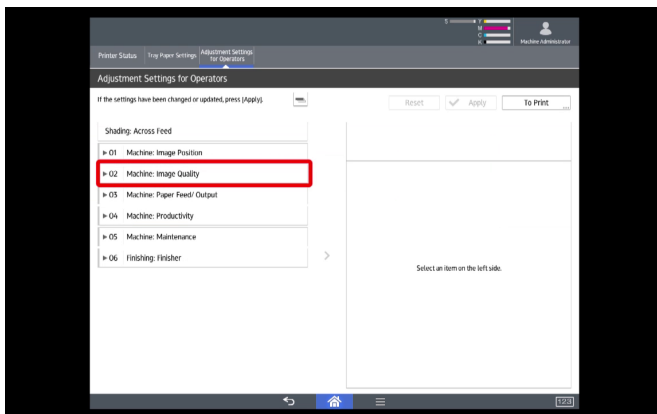
Note: Machine may be powered on after step 81

5th Colour replacement

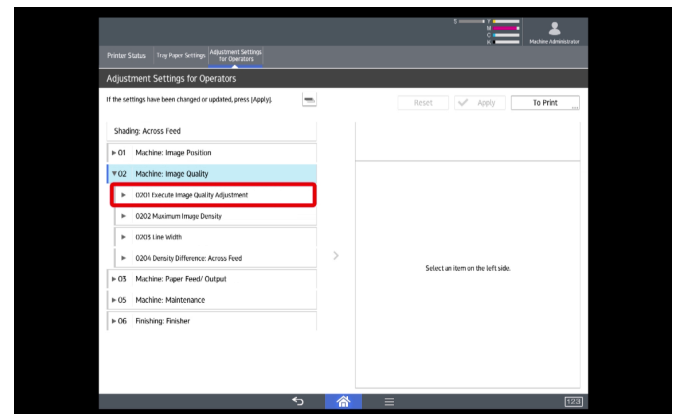
85. Wait until the machine has completely re-started and the engine has completely cycled down to idle.



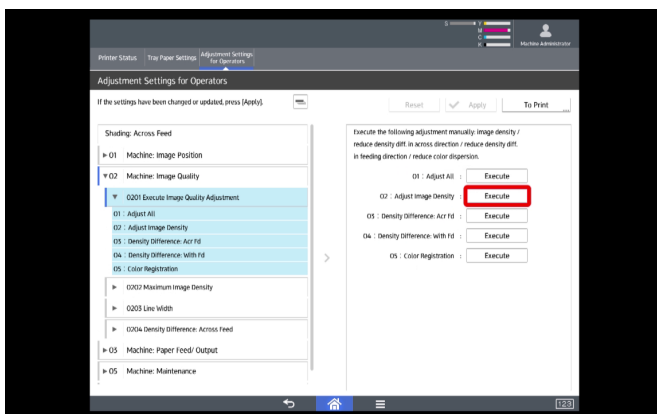
86. Select "Adjustment Settings for Operators".



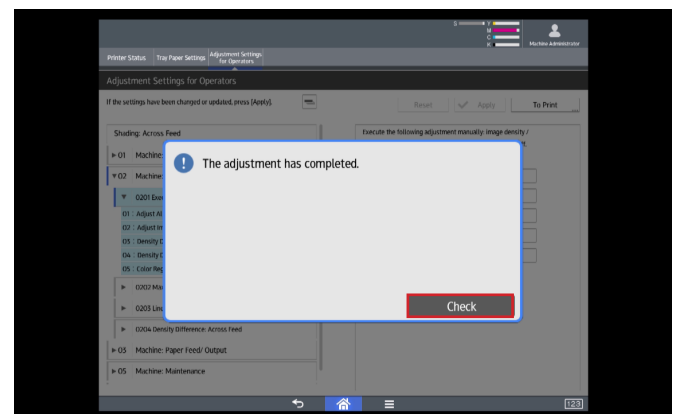
87. Select "02 Machine Image Quality".



88. Select "0201 Execute Image Quality Adjustment".



89. Execute "02 Adjust Image Density".



90. Select "Check" once complete..

