

Customer:
Date/Time printed:
Media:
Source/Output Profile:
Printer has been calibrated: ☐ Yes ☐ No
Date/Time of calibration:

Model:
Serial #:
Color / B&W Counter:
Temp. & Humidity:
Remarks:

- ☐ Installation
- ☐ 90 days benchmark
- ☐ Regular PM
- ☐ Before service
- ☐ After service
- ☐ Random
- ☐

Print Quality HELP

Technical

Resolution (600ppi)

Font Detail 16pt

Font Detail 12pt

Font Detail 10pt

RGB Red Text

75% 50% 25%

Red Outlines

Resolution (300ppi)

Font Detail 16pt

Font Detail 12pt

Font Detail 10pt

RGB Green Text

75% 50% 25%

Green Outline

Resolution (200ppi)

Font Detail 16pt

Font Detail 12pt

Font Detail 10pt

RGB Blue Text

75% 50% 25%

Blue Outline

Resolution (100ppi)

Font Detail 16pt

Font Detail 12pt

Font Detail 10pt

RGB Black Text

75% 50% 25%

Black Outlines

RGB Grey Text

■ RGB Black Image

■ RGB Grey Image

Live Text (C)

Font Detail 8pt 10%

Font Detail 8pt 20%

Font Detail 8pt 30%

Font Detail 8pt 40%

Font Detail 8pt 50%

Font Detail 8pt 60%

Font Detail 8pt 70%

Font Detail 8pt 80%

Font Detail 8pt 90%

Font Detail 8pt 100%

Outlined Text (C)

Font Detail 8pt 10%

Font Detail 8pt 20%

Font Detail 8pt 30%

Font Detail 8pt 40%

Font Detail 8pt 50%

Font Detail 8pt 60%

Font Detail 8pt 70%

Font Detail 8pt 80%

Font Detail 8pt 90%

Font Detail 8pt 100%

Live Text (Y)

Font Detail 8pt 10%

Font Detail 8pt 20%

Font Detail 8pt 30%

Font Detail 8pt 40%

Font Detail 8pt 50%

Font Detail 8pt 60%

Font Detail 8pt 70%

Font Detail 8pt 80%

Font Detail 8pt 90%

Font Detail 8pt 100%

Outlined Text (Y)

Font Detail 8pt 10%

Font Detail 8pt 20%

Font Detail 8pt 30%

Font Detail 8pt 40%

Font Detail 8pt 50%

Font Detail 8pt 60%

Font Detail 8pt 70%

Font Detail 8pt 80%

Font Detail 8pt 90%

Font Detail 8pt 100%

Live Text (M)

Font Detail 8pt 10%

Font Detail 8pt 20%

Font Detail 8pt 30%

Font Detail 8pt 40%

Font Detail 8pt 50%

Font Detail 8pt 60%

Font Detail 8pt 70%

Font Detail 8pt 80%

Font Detail 8pt 90%

Font Detail 8pt 100%

Outlined Text (M)

Font Detail 8pt 10%

Font Detail 8pt 20%

Font Detail 8pt 30%

Font Detail 8pt 40%

Font Detail 8pt 50%

Font Detail 8pt 60%

Font Detail 8pt 70%

Font Detail 8pt 80%

Font Detail 8pt 90%

Font Detail 8pt 100%

Live Text (K)

Font Detail 8pt 10%

Font Detail 8pt 20%

Font Detail 8pt 30%

Font Detail 8pt 40%

Font Detail 8pt 50%

Font Detail 8pt 60%

Font Detail 8pt 70%

Font Detail 8pt 80%

Font Detail 8pt 90%

Font Detail 8pt 100%

Outlined Text (K)

Font Detail 8pt 10%

Font Detail 8pt 20%

Font Detail 8pt 30%

Font Detail 8pt 40%

Font Detail 8pt 50%

Font Detail 8pt 60%

Font Detail 8pt 70%

Font Detail 8pt 80%

Font Detail 8pt 90%

Font Detail 8pt 100%

Font Detail @ 24pt

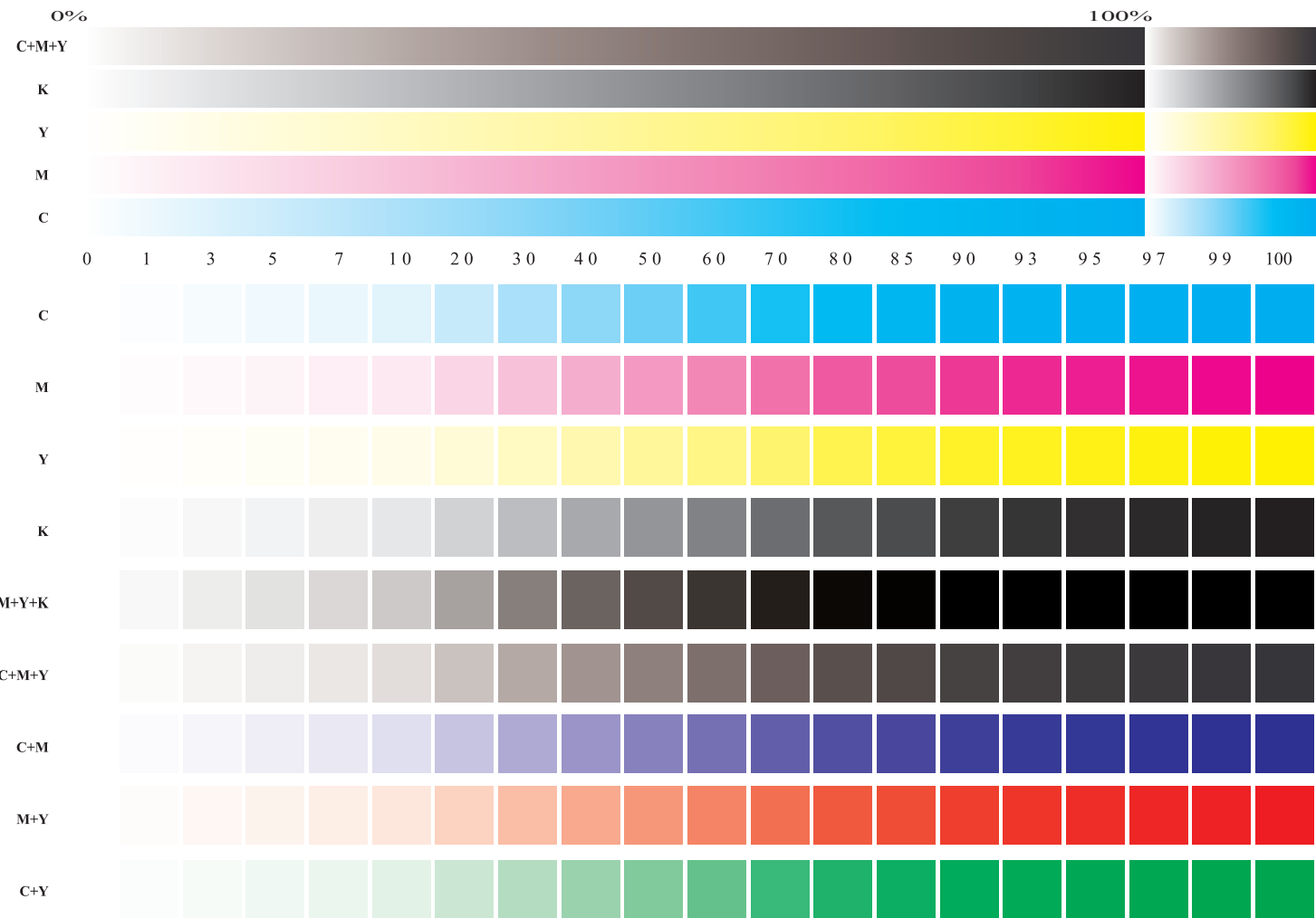
Font Detail @ 20pt

Font Detail @ 16pt

Font Detail @ 24pt

Font Detail @ 20pt

Font Detail @ 16pt



Process Cyan

Process Magenta

Process Yellow

Process Black

CMYK 100 (400%)

RGB Red

RGB Green

RGB Blue

RGB Black

PANTONE Orange 021 C

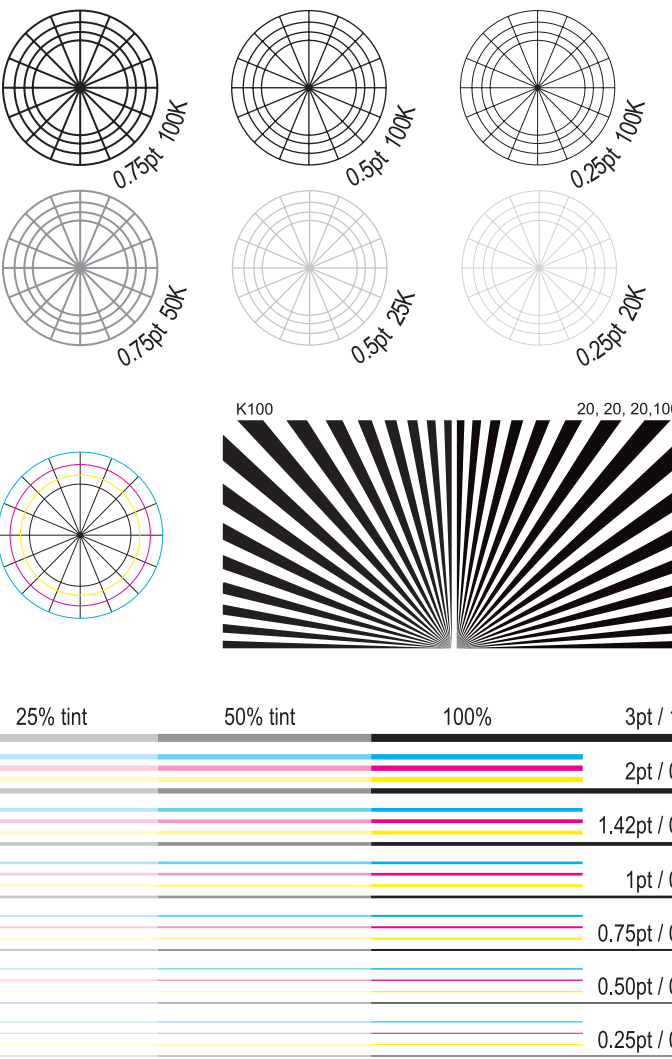
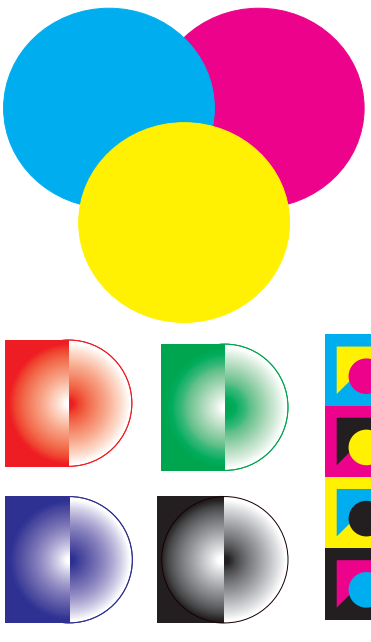
Process MY

Process CY

Process CM

C60, M50, Y50, K00

PANTONE Reflex Blue C



Blue

Blue

Blue

Font Detail 10pt

Font Detail 9pt

Font Detail 8pt

Font Detail 7pt

Font Detail 6pt

Font Detail 5pt

Font Detail 4pt

Font Detail 3pt



Customer: _____
Date/Time printed: _____
Media: _____
Source/Output Profile: _____
Printer has been calibrated: ☐ Yes ☐ No
Date/Time of calibration: _____

Model: _____
Serial #: _____
Color / B&W Counter: _____
Temp. & Humidity: _____
Remarks: _____

- ☐ Installation
- ☐ 90 days benchmark
- ☐ Regular PM
- ☐ Before service
- ☐ After service
- ☐ Random

Print Quality HELP

Technical

Quality of rasterized text: Text within a low resolution image will cause more pixelation as compared to an image with higher resolution. This is used to determine at which resolution does the text become pixelated



RGB Red Text
75% 50% 25%
Red Outlines

RGB Green Text
75% 50% 25%
Green Outline

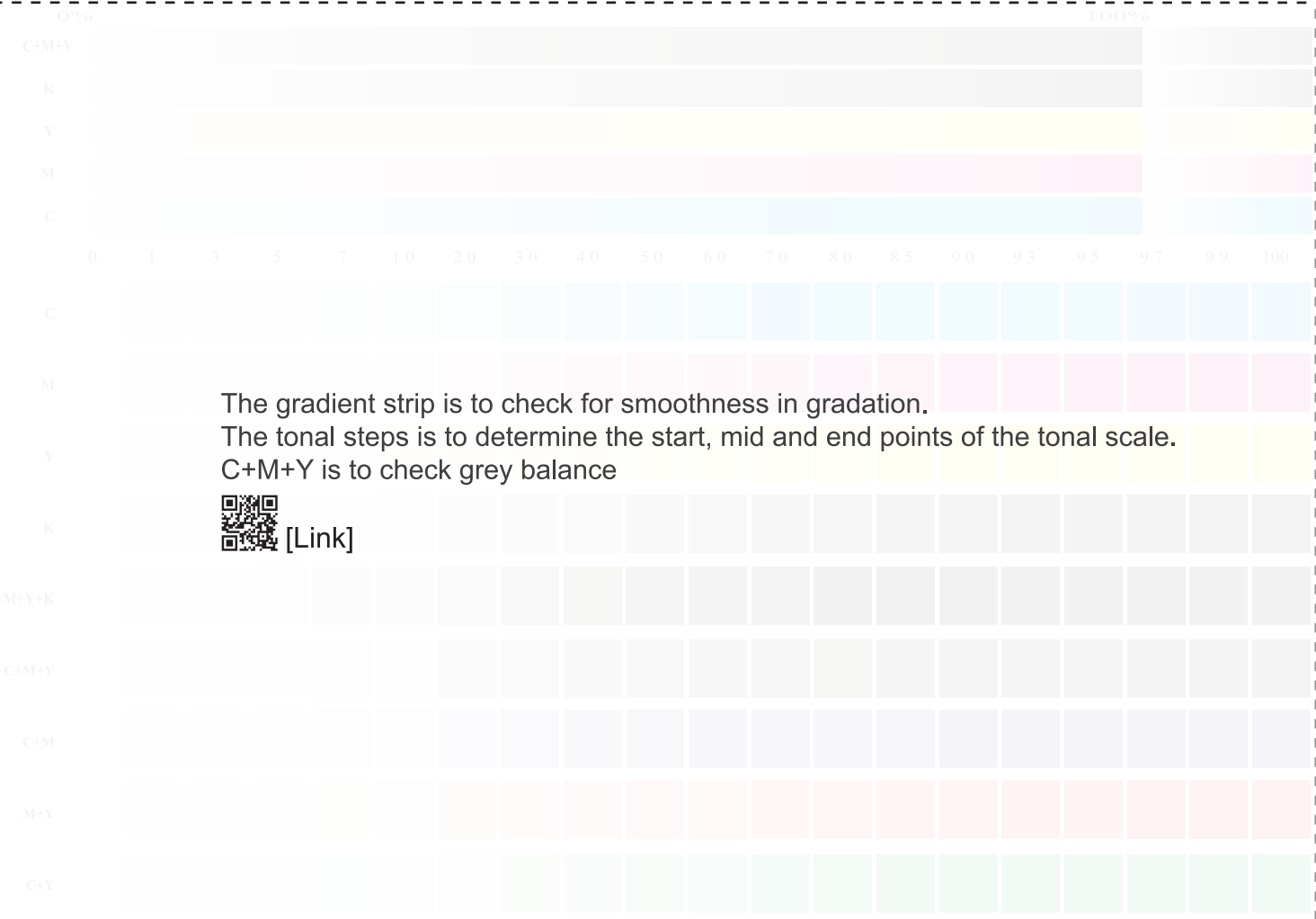
RGB Blue Text
75% 50% 25%
Blue Outline

RGB Black Image

RGB Grey Image

RGB Text and Graphics processing: Help to understand how the RIP process the RGB vector object.

[Link]



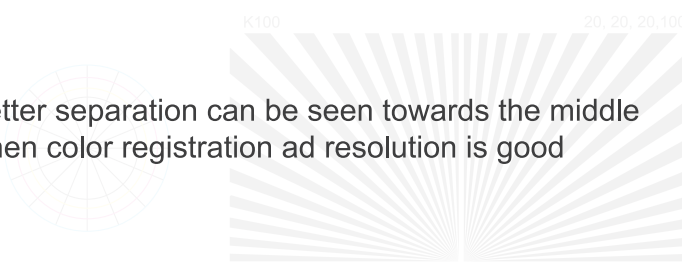
The gradient strip is to check for smoothness in gradation.
The tonal steps is to determine the start, mid and end points of the tonal scale.
C+M+Y is to check grey balance



Check lines of the wheels are sharp and clear with no missing areas and lines



Better separation can be seen towards the middle when color registration and resolution is good



Halftone text and quality of Text and Graphics: Text and Graphics quality may be improved with some features within the RIP. These text samples help to determine at which % the font is not acceptable

Font Detail @ 24pt
Font Detail @ 20pt
Font Detail @ 16pt
Font Detail @ 12pt
Font Detail @ 10pt
Font Detail @ 8pt
Font Detail @ 6pt
Font Detail @ 4pt
Font Detail @ 2pt

Font Detail @ 24pt
Font Detail @ 20pt
Font Detail @ 16pt
Font Detail @ 12pt
Font Detail @ 10pt
Font Detail @ 8pt
Font Detail @ 6pt
Font Detail @ 4pt
Font Detail @ 2pt

Font Detail @ 24pt
Font Detail @ 20pt
Font Detail @ 16pt
Font Detail @ 12pt
Font Detail @ 10pt
Font Detail @ 8pt
Font Detail @ 6pt
Font Detail @ 4pt
Font Detail @ 2pt

Font Detail @ 24pt
Font Detail @ 20pt
Font Detail @ 16pt
Font Detail @ 12pt
Font Detail @ 10pt
Font Detail @ 8pt
Font Detail @ 6pt
Font Detail @ 4pt
Font Detail @ 2pt

Black text quality: Times New Roman with size range from 2pt to 24pt is used to determine at which point does the font becomes illegible and loses quality



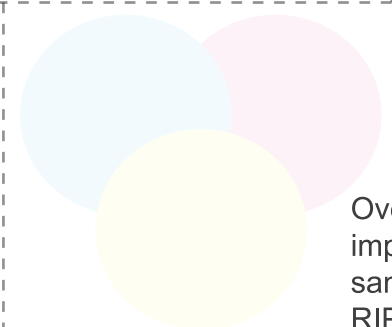
Process Cyan Process Magenta Process Yellow Process Black CMYK 100 (400%)

Process Red Process Green Process Blue Process Black PANTONE Orange

Process MY Process CY Process CM C60 M50 Y50 K00 PANTONE Reflex Blue C

Different color purity and color conversion, different types of black and toner fusing

[Link]



Overprint and trapping: There are features in the RIP to improve print quality of color mis-registration. These samples are used to see how these features work in the RIP

Font Detail 10pt
Font Detail 8pt
Font Detail 6pt
Font Detail 4pt
Font Detail 2pt

Font Detail 10pt
Font Detail 8pt
Font Detail 6pt
Font Detail 4pt
Font Detail 2pt

Font Detail 10pt
Font Detail 8pt
Font Detail 6pt
Font Detail 4pt
Font Detail 2pt

Font Detail 10pt
Font Detail 8pt
Font Detail 6pt
Font Detail 4pt
Font Detail 2pt

Radial gradients: Determine if the gradient is smooth from the middle of the circle to the outer edge



Customer:

Date/Time printed:

Media:

Source/Output Profile:

Printer has been calibrated: ☐ Yes ☐ No

Date/Time of calibration:

Model:

Serial #:

Color / B&W Counter:

Temp. & Humidity:

Remarks:

☐ Installation

☐ 90 days benchmark

☐ Regular PM

☐ Before service

☐ After service

☐ Random

☐

Print Quality HELP

Color Management
ISO Coated v2 (Fogra39L)



Print Quality HELP

Color Management

PSO COATED v3 (Fogra51)

ISO 400

Customer: _____

Date/Time printed: _____

Media: _____

Source/Output Profile: _____

Printer has been calibrated: ☐ Yes ☐ No

Date/Time of calibration: _____

Model: _____

Serial #: _____

Color / B&W Counter: _____

Temp. & Humidity: _____

Remarks: _____

☐ Installation

☐ 90 days benchmark

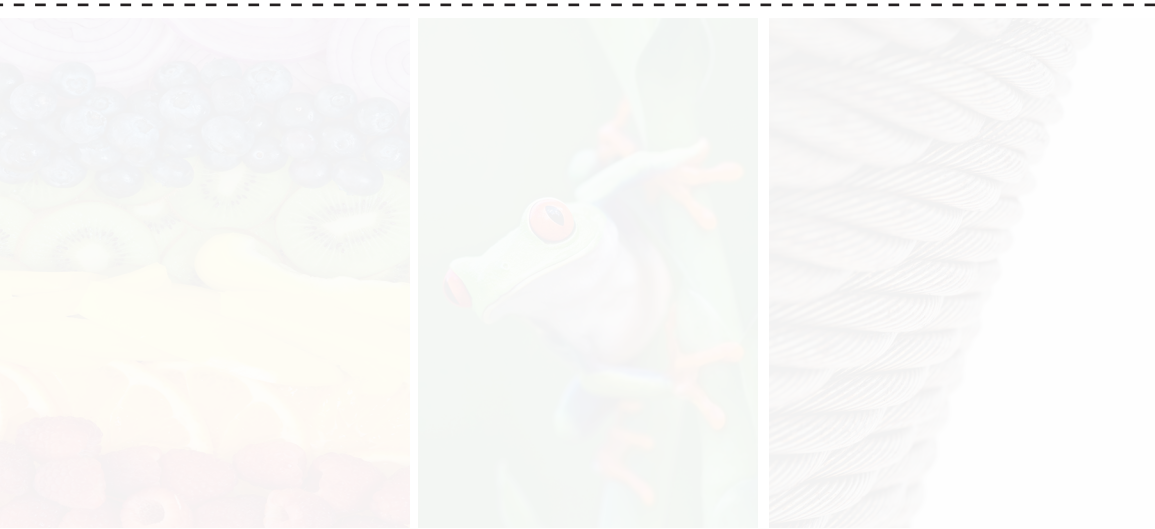
☐ Regular PM

☐ Before service


☐ After service


☐ Random

☐ _____




Color saturation, gold and detail

[\[Link\]](#)



Shadow, highlight, grayscale and details

[\[Link\]](#)



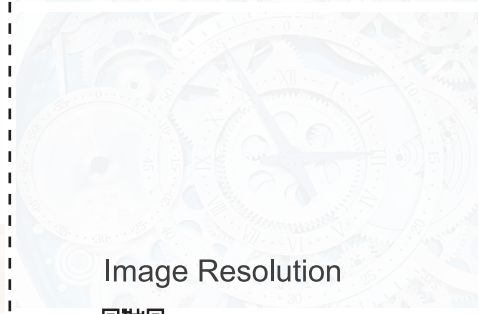



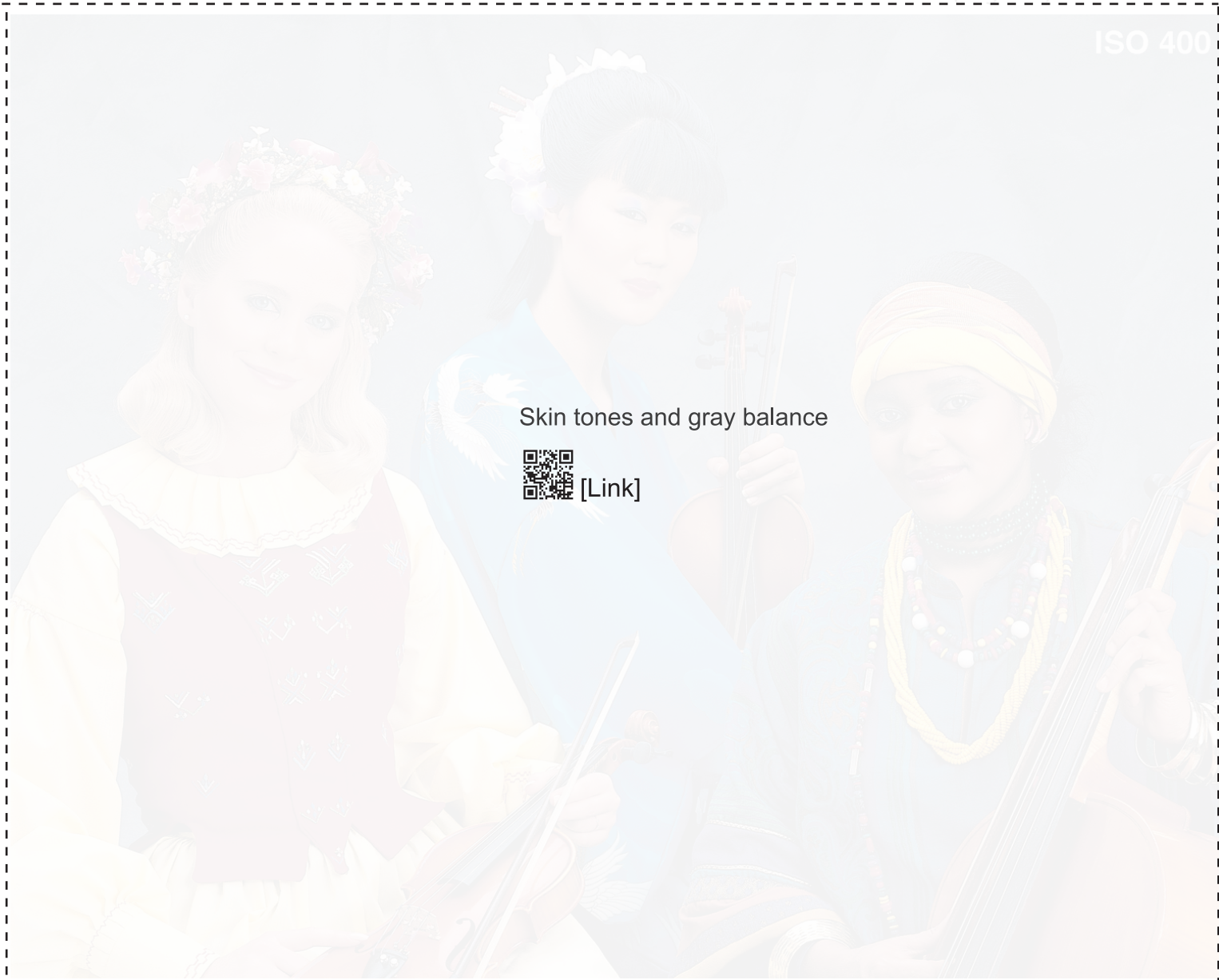
Image Resolution

[\[Link\]](#)





Color Management of RGB to CMYK conversion

[\[Link\]](#)




Skin tones and gray balance

[\[Link\]](#)



Color Management of RGB to CMYK conversion

[\[Link\]](#)