

# Aficio™ SP 3510DN



Compact, speedy black and white printer



**RICOH**  
imagine. change.

**Small, smart and speedy: the Aficio™SP 3510DN is at home in any small or personal office. It offers everything you need for everyday document printing. Network-ready as standard and double-sided printing, this black and white A4 laser printer is easy to operate and maintain.**



### **Black and white**

The mono device has a print resolution of 1,200 x 1,200 dpi for high quality black and white output.



### **28 pages per minute (ppm)**

Enjoy speeds of 28 ppm for printing.



### **Easy on the environment**

This device features Energy Saver mode to help you lower your power consumption and reduce costs.



### **Reduce your costs**

With its low Total Cost of Ownership (TCO) and high yield toner, this device is the perfect addition to a small office.



### **Ready to go**

Fast warm up and print speeds, with a warm up of less than 20 seconds and first print out in less than 8 seconds.

The SP 3510<sub>DN</sub> is an affordable black and white laser printer that offers high-quality output in a small footprint.



## **We've reduced our carbon footprint, have you?**

At Ricoh we are using our expertise in innovation to deliver products that exceed in both performance and environmental sustainability. From green product design and energy efficient office solutions, right down to the collection and recycling of our products; everything we do helps reduce usage of energy and resources, even as we push the limits of technology and productivity.

### **Machine Recycling Program**

We have a free program designed for our customers to recycle their Ricoh machines once they have reached the end of their life. Since launching in 2002, we have successfully recycled over 180 tonnes of Ricoh machines into reusable materials.

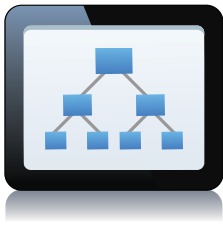
### **Consumables Recycling Program**

Ricoh's Consumables Recycling Program – the first established in Australia – will ensure your toner cartridges and other consumable products used and returned will be recycled, achieving a recycling ratio of 98%.



### Productive

Produce your documents in no time with the SP 3510DN. The printer warms up in less than 20 seconds and in a mere 8 seconds, the first print is ready on your desk. Continuous print speed is a fast 28ppm.



### Easily connected

Our devices are suitable for shared use and with standard USB 2.0 and Ethernet 10 base-T/100 base-TX, the SP 3510DN fits right into your existing network. You can send each job to the most appropriate network machine; that way, you get the best value from each of your output systems.



### Versatile printing

- Save time by collating your prints automatically
- Protect confidential documents by using a watermark





## User-friendly operation

Like all Ricoh products, the SP 3510<sub>DN</sub> is straightforward and easy to use. Quick and simple user maintenance is ensured and with only one easy-to-replace cartridge, you conveniently replace drum and toner in one go. Paper can easily be removed from the front operational paper pass if needed.



## Reliable partner

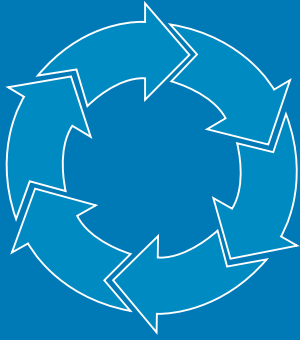
The SP 3510<sub>DN</sub> is built to last and will never let you down. Its high duty cycle and long machine life means it is constantly at your service. Ricoh guarantees the excellent quality of its products; you can rely on our proven experience and expertise to help you optimise your business processes.



## Environmentally friendly printing

Like all Ricoh products, the SP 3510<sub>DN</sub> reflects Ricoh's commitment to the environment, through the use of toxic free materials and low power consumption (Energy Saver mode).

## Solutions



### Business Solutions Group

When you buy a Ricoh device you gain access to our Business Solutions Group – a dedicated software support centre. Come to us with your challenge and we will identify the solution, source it internally, or develop one specifically to suit your business and integrate into your existing systems.

The Business Solutions Group works closely with customers and application developers to extend the efficiencies of Ricoh's software-enabled copiers and printers in order to meet specific business needs.

## Environment

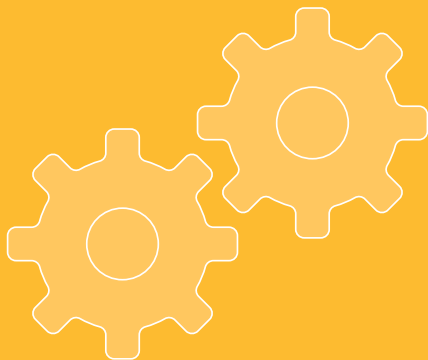


### Green Vision

Ricoh's environmental management policy is one of our highest corporate priorities and places us amongst the leaders in environmental management and corporate social responsibility.

Our vision as a global organisation is to reduce our environmental footprint collectively to 1/8th of our year 2000 level by 2050. To achieve this target, we are harnessing our expertise, capability and capacity for technical innovation and combining it with our human and financial resources to execute meaningful initiatives in support of this vision both globally as well as locally.

## Service



### Responsive Service

At Ricoh we are dedicated to offering our customers the highest level of service and maintenance; that is why our service response times average a mere four hours and you have access to over 500 manufacturer-trained technicians across the country.

To place a service call or to speak with one of our friendly customer service agents, simply phone our national contact centre on 1800 181 002 between 8am – 8pm EST.

## Manage your printing

- Secure your information
- Cut costs and increase efficiency
- Centralise frequently used documents
- Improve your customer relationship management with personalised printing

## Manage your documents

- Share information quickly and easily through your business
- Save time by scanning directly into applications used by your organisation
- Easily consolidate paper and electronic documents and processes

## Manage your devices

- Meter reads and billing
- Usage reporting
- Matching device location to workload
- Efficiency optimisation and cost reduction

## Environmentally friendly solutions

Ricoh solutions can help your organisation minimise its impact on the environment and promote sustainability. Here are just some ways it can be done:

- Document management software allows users to store, retrieve, deliver, revise and manage documents without ever printing a hardcopy.
- Rules-based printing can automatically redirect print jobs to the most suitable device to minimise energy consumption, ensure the use of resource saving features, and control access to colour output.
- Managing your devices and obtaining centralised reports helps to establish printing benchmarks, analyse inefficiencies, justify fleet consolidation and device reduction and help change user behaviour.

## 3 year Printer Warranty

Ricoh's award winning range of colour and black & white laser printers come with a standard three year on-site warranty. This sets a new industry benchmark in Australia.

We are proud of our excellent reputation in customer service. You can feel confident that in the unlikely event that you encounter an issue, Ricoh will quickly and easily rectify it. Our contact centre is available to assist you for the life of the printer's warranty and if an issue cannot be resolved over the phone, one of our qualified service technicians will come to you and fix the printer on site, usually by the next business day.



# Specifications

## Printer

Technology:	Laser beam scanning & electro-photographic printing Mono component toner development
Print speed:	28 prints per minute
Warm-up time:	Less than 20 seconds
First print speed:	Less than 8 seconds
Dimensions (W x D x H):	370 x 392 x 262 mm
Weight:	12.7 kg
Power source:	220 - 240 V, 50 - 60 Hz
Power consumption:	
Maximum:	Less than 880 W
Energy saver mode 1:	Less than 70 W
Energy saver mode 2:	Less than 5 W
Duty cycle:	35,000 prints per month

## Controller

Processor:	295 MHz
Printer language:	PCL6, PostScript® 3™ emulation
Resolution:	600 x 600 dpi, 1,200 x 1,200 dpi equivalent
Memory:	64 MB
Drivers:	PCL6, PostScript® 3™
Fonts:	80 fonts

## Connectivity

Network protocol:	TCP/IP, IPP
Supported environments:	Windows® XP/Vista/7/ Server 2003/Server 2008 Macintosh OS X 10.3 or later
Interface:	USB 2.0 Ethernet 10 base-T/100 base-TX

## Paper Handling

Paper input capacity:	
Standard:	1 x 250-sheet paper tray 50-sheet bypass tray
Maximum:	550 sheets
Paper output capacity:	125 sheets (face down)
Paper size:	
Paper tray:	A6 - A4
Bypass tray:	A6 - A4
Optional tray:	A5 - A4
Paper weight:	
Paper tray:	52 - 162 gsm
Bypass tray:	52 - 162 gsm
Duplex and optional tray:	60 - 105 gsm
Media:	
Paper trays:	Plain paper; recycled paper;
Bypass tray:	Plain paper; recycled paper; envelopes

## Consumables

Toner:	6400 sheets
--------	-------------

The Aficio™SP 3510DN ships with a 1,500-prints starter kit.

## Options

1 x 250-sheet paper tray
--------------------------

# RICOH



Ricoh Australia Pty. Ltd. 8 Rodborough Road, Frenchs Forest, NSW 2086. Phone: 1800 181 002 Fax: 02 8977 1100 Web: ricoh.com.au  
Ricoh New Zealand Pty. 60 Stanley Street, Parnell, Auckland New Zealand. Phone 0800 2 Ricoh (0800 2 74264) Fax: 09 915 1401 Web: ricoh.co.nz

Printed on a Ricoh. Product code: **B960034**